

MATARANGI BEACH PAPER



Whangapoua
Matarangi
Kuaotunu
Otama
Opito Bay
Te Rerenga
Wharekaho

Aoife Turns Schoolwork into Supernatural Thriller



Whangapoua's own Aoife Given is making major waves in the local literary scene. Writing under the pen name Audrey Gun, the talented Year 8 Te Rerenga School pupil has officially published her debut thriller, *The Veil*. What started as a simple classroom exercise has transformed into a gripping, published reality, capturing the imagination of readers well beyond her rural Coromandel doorstep.

The Veil is a fast-paced story blending suspense, mystery, and supernatural elements. The novel follows Andras, a mysterious, ghost-like assassin feared by criminals and corporations alike. Trained from childhood to leave no witnesses behind, Andras faces an unexpected twist when a strange client hires her for an unusual mission: to kill the client herself.

The target claims to know the truth about a dangerous childhood secret Andras witnessed in a harbour long ago. Soon, the assassin finds herself hunted by terrifying entities that erase memories instead of lives. The book forces Andras to question whether survival is enough, or if some truths are worth risking everything to protect.

The inspiration for this complex world came from an everyday school task. "The book first started as a simple school free-writing assignment before quickly growing into something much bigger," Aoife says. "One chapter turned into another, and before I knew it, I had written an entire book. I've always loved books like *The Hunger Games*, and they inspired me to create my own story and world."

The journey to finishing the book took on a deeper meaning when Aoife had to undergo foot surgery. Faced with a lengthy recovery period, she turned to her manuscript. Writing gave her a positive, creative outlet to focus on during her healing process, and the project quickly became a massive milestone.

For Aoife, the drive to finish the book was entirely personal. She did not write the novel for money or attention. Instead, she wrote it to prove to herself that she could accomplish a

goal of this magnitude. Publishing a book has been one of her primary dreams since she first learnt to read and write.

When she is not dreaming up supernatural thrillers, the Year 8 student enjoys life in rural New Zealand alongside her parents, her "annoyingly lovable" brother, and her two loyal Labradors, Buddy and Oreo. Through her work, she hopes to give local readers a chance to escape into another world and inspire other young people to dream a little bigger.

In addition to achieving a lifelong dream, Aoife is using her debut novel to tackle a practical real-world challenge. This term, her Year 8 class at Te Rerenga School is focused on a business project designed to teach pupils how to run an enterprise.

Aoife is putting those business skills to work by selling copies of *The Veil* to raise funds for her upcoming school camp to Wellington. She is incredibly excited about the trip, which promises to be a fantastic educational experience for the entire class. Members of the community can support this bright young local author and help her get to Wellington by purchasing a copy of *The Veil* directly.

To order, contact Aoife directly via her school email address at aoifeg@tererenga.school.nz. Cash payments can be made directly to Aoife.

Alternatively, bank transfer payments can be made to the Te Rerenga School Bank Account: 02-0304-0010216-00. Please ensure you state clearly who the order is from and what you have purchased in the bank reference field so the school can track your order.

Your EVERYDAY LOCAL

Convenient, Great Range & Prices Quality Fresh Products

Mr 4

Open 7 Days
195 Matarangi Drive, Matarangi - p 07 866 5391

4 FOUR SQUARE MATARANGI

MASTERCRAFT
KITCHENS WHITIANGA
Crafting memories one kitchen at a time.



Design



Production



Installation

Discover how attention to detail can transform your space! Whether you want to renovate your bach or create your dream home, Mastercraft Kitchens Whitianga is here to bring your vision to life. Visit our website or schedule an appointment with one of our designers to get started on your project!

Contact Us
07 866 4111

info.whitianga@mastercraft.co.nz
www.MastercraftKitchensWhitianga.co.nz

WE'VE GOT YOU COVERED!

From practical stock solutions through to dream home aspirations, we have you covered with great finance options!

Come visit us at our co-located Carpet Court & CurtainStudio store 1 Blacksmith Lane, Whitianga | 07 834 6463

Carpet | Vinyl | Wood | Rugs
Curtains | Blinds | Tracks | Shutters | Accessories



CurtainStudio



3 2 1 0 108.7m²



BUILD NEW

**Bach design
from \$392,000***

G.J. Gardner has an extensive range of customisable plans to suit all kinds of families, lifestyles and budgets.

Talk to GJ's about building your new home or bach today.

New Matarangi showhome open now.



Scan here to enquire or call your local Coromandel team on 07 865 7554.

*Build cost only. Regional variations may apply. Price valid until 30th June 2025. Whangamata Floor Plan © G.J. Gardner Homes 2025. Images are artist's impression only.

G.J. Gardner. HOMES

The Extraordinary Case of Málaga and Matarangi

By Luis Felipe Romero



The MBP is privileged to print this article by Professor Luis Felipe Romero, University of Malaga, Spain. A similar article was printed in Malaga's local newspaper 'Diario Sur'. Malaga in Southern Spain has a remarkable connection with Matarangi. "A remarkable geographical curiosity directly links our two communities. Matarangi and the neighborhood of El Palo in Málaga are part of a "statistical miracle": we are exact antipodes. In a world covered mostly by water, the probability of a "coast-to-coast" tunnel is incredibly low (0.000384%), yet our beaches are perfectly aligned through the Earth's core," writes Professor Romero.

Who hasn't dreamed, as a child, of digging a hole to the other side of the world? To be honest, I hate to disappoint younger

readers, but the chances of surviving the 6,000-degree core and 3 million atmospheres of pressure are somewhat slim. But even if you beat the odds, you'd likely drown in the middle of the ocean, as only 4% of the planet's surface has a "land-to-land" antipode.

However, there is an exception so precise it almost looks like a cartographic error. If you start digging in the sand at the beach of the traditional fishing neighborhood of El Palo (Málaga), and you make it through the 12,700 kilometers of the Earth's diameter, you will emerge exactly on the sand of another paradise: Matarangi, on the Coromandel Peninsula.

To understand the magnitude of this coincidence, let's set aside the romance and look at the data. Beyond the 4% land-to-land probability, what becomes truly unusual is the "coast-to-coast" probability. If you were to throw a dart at random onto the Earth's 510 million square kilometers, only 0.196% would land on a coastline. Consequently, only 0.000384% of the world's "tunnel diggers" share the same fortune as the people of Málaga. And that's without factoring in the odds of finding a sandy beach on the other side instead of a rugged cliff.

But there is a third condition. What truly delights me is the idea of starting to dig next to a chiringuito (our beach restaurants), like the famous "El Tintero" and, after overcoming the heat and pressure, finding another beach like ours: with its own vibrant seaside culture, picturesque houses, and tourists enjoying a perfect climate. You might even spot a waka resting on the sand, which is the closest thing to our traditional jábega boats.

By the way, if you are curious about the physics of this hypothetical tunnel, be prepared for a frantic 42-minute and 12-second trip. You would reach 28,400 km/h just as you pass through the center of the Earth, where gravity is zero. You'd also need protection against the Coriolis effect to avoid turning the journey into a giant planetary cheese grater.

If you manage to make the side-to-side collisions perfectly elastic, you would reach the end of the trip at zero speed, your feet touching those of a surprised Maori lad sitting at the edge of the abyss. That's why we call them "antipodes" (from the Greek for "opposite feet"), right?

This curious geo-statistical discovery was contributed to by my Master's in Computer Engineering students during a Geographic Information Systems (GIS) project. We overlaid world coastlines with their antipodal equivalents, finding only about 500 intersection points, mostly concentrated in three regions. While two occur between South America and Southeast Asia, the New Zealand coincidence is particularly striking.

After filtering these intersections by population centers, only five significant matches appeared. Four of them connect New Zealand with Spain and Morocco: A Coruña, Noia, Tangier, and Málaga. The fifth is Padang (Indonesia) and Esmeraldas (Ecuador), though they likely don't have chiringuitos quite like ours.

The fact that Málaga and Matarangi face each other through the Earth's core is more than a fun fact; it is a statistical miracle. In a world that is 71% water, finding an almost perfect "mirror" like ours is nearly absurd. Two towns separated by 12,700 kilometers of incandescent rock, with languages as different as their seasons, yet poetically linked by an extraordinary coincidence.

So, the next time you are at Matarangi and you plant your beach umbrella firmly in the sand, do it with pride. Smile. Think that exactly 12,700 kilometers away, in a straight line through our immense blue globe, a Spaniard in Málaga might be doing exactly the same thing. Against all mathematical and geographical logic, both umbrellas are pointing at each other, secretly connecting the two ends of the most impossible tunnel in the world.

Historic Treaty Settlement Restores Matarangi Pā to Ngāti Hei

The Ngāti Hei Treaty of Waitangi settlement was finalised on 13 May, concluding a 15-year negotiation journey with the Crown. The comprehensive package represents the largest financial and cultural redress of three regional packages in the wider Coromandel area. Treaty of Waitangi Negotiations Minister Paul Goldsmith praised the iwi's resilience, noting that the milestone recognises the generation-spanning impacts of historical Crown breaches and severe land loss.

Under the agreement, Ngāti Hei will receive an \$8.5 million financial injection alongside 15 cultural redress properties,

two joint cultural properties, and three commercial properties available for purchase. Rather than distributing the funds as cash payments, the iwi plans to leverage its existing tourism and fishing presence. The money will be directly invested into long-term community benefits, specifically targeting language revitalisation initiatives, education scholarships, and local kaitiaki roles to protect surrounding ecosystems.

The cultural redress centres on restoring ownership of ancestral land through 15 significant local sites vested back to the iwi, including Whitianga Pā and the 319-hectare Opou block. For local residents, the most impactful element is the return of a 21.7-hectare parcel of the Matarangi Bluff Scenic Reserve, renamed the Matarangi Pā Scenic Reserve. The post-settlement governance entity of Ngāti Hei will administer the land under the Reserves Act, reconnecting their history to the present-day community.

Crucially, existing public access rights remain legally protected, ensuring the popular Matarangi Bluff Track stays open. The reserve sits within a broader ecological corridor where wild North Island brown kiwi are self-introducing and breeding. Moving forward, Thames-Coromandel District Mayor Peter Revell confirmed the council is prepared to enter into joint-management agreements to ensure these natural treasures are co-governed and accessible to all.



Featured: Joe Davis, Kaumatua of Ngati Hei

WWW.DESIGNEDLY.CO.NZ
M: 021 367 181

graphic design by a human

designedly
Angie Soanes
ANGIESOANES@DESIGNEDLY.COM

 **COMER LEGAL**
MOBILE LAW SOLUTIONS

Our lawyer visits your home or business anywhere on the Peninsula at no extra cost.

Want to know more? Call Trish on:
020 4171 4916
www.mobilelawsolutions.co.nz



ACCIDENTS - BREAKDOWNS - JUMPSTARTS - UNLOCKS - BATTERIES
ALL INSURANCE COMPANIES

 **WHITIANGA TOWING**

 **0800TOW4YOU**

WWW.WHITIANGATOWING.CO.NZ
STEVE 022 349 4868

Why a Hamilton Super-Council Will Leave the Coromandel Stranded

As central government pushes for sweeping local government reform, a line has been drawn in the sand. Local councils have until August 2026 to pitch their own unification blueprints, or a forced “backstop” mandate from Wellington will do it for them. The bureaucratic heavyweights in Hamilton are already salivating, pushing a corporate vision for a single, massive Waikato “Super-Council”.

For communities like Matarangi, this is not a dry administrative debate. It is a direct threat to our survival. If history has taught us anything, it is that centralisation always feeds the metropolitan beast while starving the regions. We have seen this movie before, and we know exactly how it ends.

Look back to the late-1980s healthcare reforms. The fiercely independent Thames Hospital Board was systematically dismantled and swallowed by the Waikato Area Health Board in Hamilton. The promises of “regional efficiency” quickly evaporated and the 200 bed Thames Base hospital with its 7 wards was rapidly reduced to a secondary health facility of 54 beds. Funding, vital medical equipment, specialised clinical staff including four resident surgeons and a cardiologist, were sucked out of our largest provincial town to bolster Waikato Hospital. Thames Hospital was left hollowed out. We were forced to make grueling journeys hours away just to access the same level of healthcare their own communities had funded for generations.

The same systemic neglect is permanently etched into our roads. When infrastructure funding is routed through a Hamilton-centric regional lens, the Coromandel is treated as a low-volume holiday cul-de-sac. It took generations of local pleading to replace the single-lane Kopu Bridge bottleneck. More telling was the 2016 blueprint to upgrade SH2—our vital social and commercial umbilical cord to Auckland. A promised four-lane expressway from Pokeno to Mangatarata was completely gutted after the 2017 election, downgraded to wire barriers and roundabouts. 90kph speed limits because Hamilton based planners prioritised inland logistics hubs and the Waikato Expressway instead. The bureaucratic reality is that Hamilton does not understand the Coromandel. Doesn't even want to. They look at maps and see a rural appendage.

The true cultural, commercial, and societal heartbeat of our Coromandel region runs directly to Auckland. Since the 19th-century

maritime highways shipped our produce, gold and Kauri out of our bays, we have been tied to the city. Heck, ecclesiastically speaking we still sit under the Diocese of Auckland, moreover it wasn't until 1951 that many of our small rugby clubs, that other spiritual dimension, were still affiliated to the Auckland Rugby Union and not all with Thames Valley. Our ratepayers, businesses, and summer tourists flow up and down State Highway 2 and round SH25. Our financial and social lifecycle is synchronised with Auckland, not the inland agricultural basin of the Waikato.

Crucially, the Coromandel possesses an asset that Hamilton can neither buy nor replicate: a powerhouse international brand. ‘The Coromandel’ is famous the world over, standing as a global bucket-list destination renowned for its pristine coastlines and untamed nature. It is, quite frankly, far more famous and better looking than the Waikato. Diluting this iconic identity into a generic, landlocked Waikato mega-council makes absolutely no commercial or indeed aesthetic sense.

Local government reform is undoubtedly necessary, but it must be the right size. The logical, resilient solution is right in front of us: a voluntary amalgamation of the Thames-Coromandel and Hauraki District Councils into a unitary authority that takes on the current roles of the soon to be disbanded WRC. This is a partnership that makes sense. It would combine 3,600 square kilometres of deeply connected land, uniting a permanent resident population of 55,000 people under a single, highly successful regional banner: The Coromandel.

Both districts already share a workforce, economic integration, and infrastructure. A combined “Coromandel” council would create a mid-sized authority with real institutional weight, completely aligned with the global brand identity we already share under Destination Coromandel. It would allow us to eliminate duplicated administrative costs and pool our balance sheets, giving us the financial muscle to handle our massive summer peak population spikes. Most importantly, it keeps our ratepayer dollars right here, protecting our vulnerable coastal roads and water systems from being diverted to fix Hamilton's urban deficits and delusions of grandeur.

A combined Hauraki-Coromandel Council is big enough to cope, but small enough to care. It keeps decision-making embedded in our communities, where local leaders can pivot instantly during a coastal weather emergency instead of waiting for a detached bureaucracy three hours away to sign off on a work order.

We must fiercely resist being swallowed by a Hamilton mega-council. If we surrender our autonomy to an inland bureaucracy, our local voice will be permanently outvoted, our resources will be drained, and our unique Coromandel identity will be erased.



This month, I want to extend a huge, heartfelt thank you to Chris Cotton. Chris has generously created and donated a collection of beautiful, handmade teddy bears to our brigade.

These special bears serve a vital purpose on our trucks, providing immediate comfort, reassurance, and a sense of safety to children during emergency situations. The kindness, time, and care will make a real difference to families in our community when they need it most.

This wonderful donation builds on a history that spans over two decades. Back in 2004, real estate company LJ Hooker (now Beach Realty) donated a teddy bear to our brigade. That original bear has been riding in our large 8371 appliance ever since to comfort small

children. While that original bear had to stay with the truck, this new collection brings a special change because children will now be able to keep the teddy bear they receive.

We have already given away our first teddy bear. When young Ruby Kaska recently broke her arm, firefighter Bob Segetin handed her one of the new bears at the scene. You should have seen the smile on Ruby's face when she held it!

Alongside our community initiatives, our crew has remained active. At the time of press, our operational responses for the month include four medical call-outs, plus setting up one secure landing zone for the rescue helicopter. As always, stay safe, and thank you to everyone who continues to support our brigade.

GOOD SORT OF THE MONTH



The Matarangi Reserves Management Group is really happy to nominate Roman Carley as the MBP's Good Sort of the Month.

Our community-fundraised life ring went missing back in November 2025, leaving a critical safety gap at the waterfront.

Thanks to Roman's sharp eyes and determination, this vital piece of lifesaving equipment has finally been recovered.

The life ring was found deeply wedged within the local mangroves.

Over the months, it had become heavily coated in oyster spat and tightly tangled in the thick coastal growth. Retrieving it was no easy task, requiring a serious amount of physical effort and heavy pulling to wrench it free from the muck.

The entire Matarangi community owes Roman a massive thank you. His hard work ensures that this community-funded asset is back where it belongs, ready to protect locals and visitors alike.

During the month of June pop on down to Lesley at the Matarangi Mataz coffee cart by the Dunes carpark for a complimentary coffee and muffin.

GATEWAY GLASS WHITIANGA




**GATEWAY
GLASS
& GLAZING**

SPECIALISTS IN:

- Joinery Maintenance • Glass Repairs
- Auto Glass • Repairs • Splashbacks
- Insect Screens • Glass Showers

Great friendly service, focused on securing your property promptly – 24 hr emergency call-out service.

**FOR ALL YOUR
WINDSCREENS, GLASS &
ALUMINIUM JOINERY REQUIREMENTS**

GATEWAY GLASS & ALUMINIUM
22 Bryce Street, Whitianga
P: 07-867 1772 F: 07-867 1248 E: whitianga@gatewayglass.co.nz

Community Rallies at Peter Moore Jones Memorial Golf Tournament to Raise Over \$8,000 for Coromandel Rescue Helicopter Trust



Featured: Steve Moss won the winning bid to shave off Neil Purchase's beard that he had for 28 years to raise money for the Coromandel Helicopter Trust.

Generosity took centre stage at The Dunes Golf Resort on Saturday, 9 May, as the annual Peter Moore Jones memorial golf tournament raised more than \$8,700 for the Coromandel Helicopter Trust.

While players turned out in full force for a competitive day on the greens, the undisputed highlight was a high-stakes charity auction featuring a dramatic beard shave by local legend Neil Purchase.

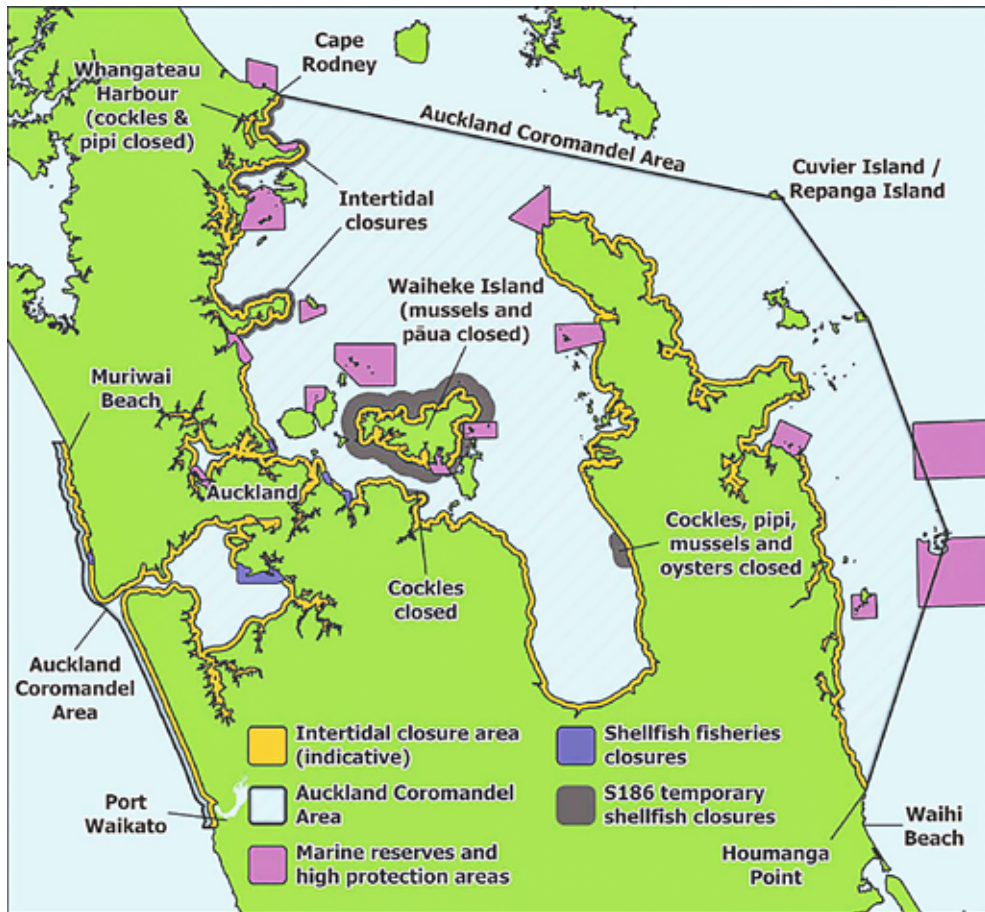
In a bid to boost the fundraising total, the Matarangi resident volunteered to auction off the opportunity to shave his trademark white whiskers. Neil had sported the iconic beard for 28 years, earning the golfing nickname "Papa Smurf". The motivation was deeply personal for Neil and his wife, Luanne. Decades earlier, their two-year-old child required a life-saving medical evacuation from Waiheke Island to Starship Hospital. This ordeal solidified the family's lifelong devotion to regional rescue helicopter services.

Bidding for the grooming rights quickly turned competitive, but local supporter Steve Moss ultimately claimed victory with a generous \$1,500 bid. Steve happily took the clippers to Neil's famous beard in front of a cheering crowd, leaving the local legend looking completely unrecognisable. Steve was thrilled to win, noting he has many friends who have relied on the Trust as a vital lifeline for isolated coastal communities.

Beyond the spectacular shave, the day featured excellent golf. The tournament welcomed the support of Julie, Todd, and Kiel Moore-Jones and their families, with Todd and Kiel presenting their father's memorial trophy.

First place was claimed by Charlie Chilwell, Jade Kennedy, Ashley Hetherington, and Christine Threadgold with 55.12 Net. Second place went to Raymond Fanning, Max Gaskell, Brian Tomlinson, and Luke Steiner on 57.25 Net. Third place went to Allison Drake-Wells, Cathy Drake-Wells, Glenn LeLievre, and Beverley LeLievre on 58 Net.

Proposed Rules for Shore-Based Shellfish Harvesting around the Coromandel



Fisheries New Zealand has launched a major public consultation on four proposed management options to restrict recreational shore-based shellfish harvesting across the Auckland and Coromandel coastlines.

Driven by growing community anxiety over intensive rockpool stripping and localized resource depletion, these potential changes aim to give fragile intertidal ecosystems an opportunity to recover.

Local residents and coastal visitors have until 5:00 PM on Friday, 12 June 2026, to submit their formal feedback.

The geographical footprint of the proposed rules targets the intertidal zone, stretching from the mean high-water mark out to 200 metres offshore.

This management area covers both the mainland coast and Waiheke Island shores, impacting diverse habitats like rocky reefs, sand flats, and mudflats. Restrictions focus on commonly gathered species like cockles, pipi, tuatua, mussels, and pāua, alongside

vulnerable rockpool invertebrates like sea snails, starfish, and sea cucumbers.

Fisheries New Zealand outlines four distinct pathways for public feedback:

- Option 1: A complete recreational harvesting ban within the 200-metre coastal boundary.
- Option 2: A partial closure with strict daily limits for specific named species.
- Option 3: An absolute shoreline ban plus a 10-shellfish daily limit for unmanaged deeper-water species.
- Option 4: A partial shoreline closure paired with that same 10-shellfish deeper-water limit.

Community input is vital to balancing environmental sustainability with local lifestyle factors. Anyone wishing to voice their perspective can review the detailed proposals and submit formal feedback directly through the official Ministry for Primary Industries online consultation portal. Alternatively, written submissions can be emailed to the agency at FMSubmissions@mpi.govt.nz, provided they are received before the final deadline at 5:00 PM on Friday, 12 June 2026.

Hatha Yoga ... with Jose Kakebeeke

Tuesdays 10 – 11.30am
Thursdays 9 – 10.30am
Fridays 9 – 10.30am 3rd age (chair yoga)

Sessions:
\$15 Single,
10 Concession Card \$130,
Gold Card \$10

Venue: Kuaotunu Hall

Ph: 021393299 or 078664888 / jose_kakebeeke@gmail.com

Good Coffee Matar

Open Everyday Outside The Dunes

BJOLI BUILDERS

Contact John 0276 4 25654

- *residential / commercial construction
- *retaining walls
- *renovations and extensions
- *fencing and decking
- *project management
- *design and builds

MATARANGI MONITORING SERVICE

Burglar alarm monitoring, servicing, installation

Bronwyn Dorrian
Licensed Security Operator
105 Ti Kouka Crescent
Matarangi

Phone: 0210231130

safe • secure • local

matarangimonitoring@gmail.com • www.matarangimonitoring.co.nz

Historic Kuaotunu Hall Available for Hire

The perfect place for your event! Our hall is suitable for all kinds of activities - functions, weddings, fundraisers, AGM's, workshops, meetings etc.

Contact Jude:
021 676434
kuaotunuhall.co.nz

BEACH REALTY

Mark Hall
Owner / Principal (Licensed Agent REAA 2008)

MOBILE: 021 607 135
OFFICE: 07 866 55 66
EMAIL: mark@beachrealty.co.nz

www.beachrealty.co.nz



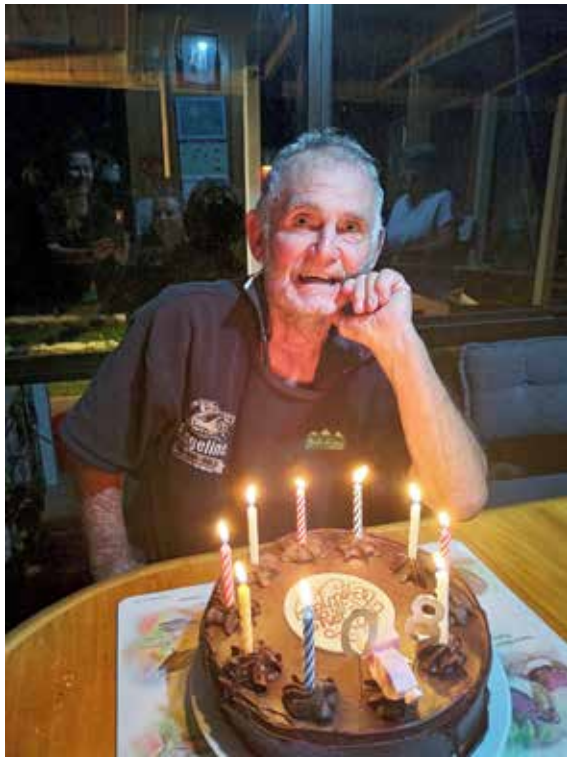
**Happy
King's Birthday
Weekend**

**Opening Hours
Seven Days a
week from
10am to 6pm.**

**Open 7 Days
10-6pm**

07 866 5957
pukuandkerre@xtra.co.nz

Congratulations Corner



A happy belated 80th birthday to local legend Bill Tucker who celebrated his big day on May 13th.

Bill left his hometown of Opunake to pursue work in the NZ Forestry Service a few years prior to taking up a position at Whangapoua Forestry Service in 1965. His 1952 Ford Prefect found the many hills a challenge, he had to stick the old girl into reverse to make it over the Kerata!

He made it to Coromandel and found the local garage where he asked old Jack Hansen if there were any more hills he had to go over to get to the Whangapoua forestry camp, Jack pointed up to the Whangapoua Hill and told him "just that one!"

Bill was beginning to wonder where the hell he was headed! He eventually made it, although the Coro hills killed the old prized Prefect.

Bill loved the forestry life and the boys he worked with. He was very soon a part of the community, and enjoyed the beautiful beaches and the many social occasions. Bill soon found his Dawny here on Whangapoua beach and his fate was sealed. Forestry to farming and everything between!

Three children, three grandies and five great grandies who all adore him and are so thankful that his old prefect made it over those Coro hills!

BLUFF ROAD WALKING + CYCLING TRACK

CONNECTIVITY BETWEEN MATARANGI & KUAOTUNU COMMUNITY FEEDBACK



Since the major rockfall in 2015 that closed the bluff road between Matarangi & Kuaotunu, TCDC (Thames-Coromandel District Council) has spent a significant amount of money in trying to shore up a walking track around the bluff road. They erected, a now collapsed, mesh system at the cove and looked at a number of potential options to enable safe access across this area. None have been progressed.

While potentially dangerous, we know that many people still use the track for walking, running & cycling on a regular basis. So in 2024, with no significant progress being made, MRRAI (Matarangi Ratepayers & Residents Association Incorporated) embarked on a project to find a safe robust solution.

It became clear that the only viable solution was a Suspension Bridge across the cove so MRRAI in conjunction with the Matarangi Community Trust funded a feasibility study to consider this option. The final report makes very clear that a Suspension Bridge over the cove is not only viable, it is the only solution that would enable safe passage across the cove for both pedestrians and cyclists.

Given that a significant funding commitment will be required from both within our communities and external agencies, it is vital we establish the level of community support we have before proceeding. Should this project not proceed, TCDC will close the track so please take the time to fill out the quick survey by scanning the QR code.

SURVEY PERIOD
30-15
MAY JUNE
2024 2024

SCAN ME!



CONTACT
For more information:
Mark Bedford
markbedford@mrrai.co.nz
021 754 087

Fill out the survey at: <https://forms.gle/gGKLQfhGfetFKhcm8>

Neil the Kererū Moves In



For the past month the Goldfields Drive home of Wynand and Janetta Breytenbach has been the personal abode of a magnificent kererū named "Neil." The plumpish woodpigeon is

been foodie with his interests centred entirely around their dining room and kitchen.

His day begins at his favourite local eatery: a miniature red guava tree right next to the dining room window. After feasting on the fruit, Neil stays for the day, taking a remarkably keen interest in whatever is cooking in the kitchen.

Through the glass, the family can get within a single foot of Neil to snap photos. He is so completely unfazed by his hosts that he even falls fast asleep right next to them.

Whether Neil thinks he is a Breytenbach or is just waiting for his turn at the stove, he is now officially part of the family.

W.A.N.T

WAITAIA NURSERY
& GARDEN CENTRE

**Citrus
Fruit Trees
Palms
Natives
Hedging
+ much more
Fertilisers
Compost
Bulk Mulch
Plant hire
for functions**

**Opening Hours
Thurs-Sun 9am-5pm
or phone by appointment
(07) 869 5910**

**Waitaia Road
Kuaotunu**

BUILDER - Licensed

Prompt and Tidy.
Over 20 yrs experience.

Ph 0274 756651

KSB

ELEVATING SPACES WITH QUALITY CONSTRUCTION + DESIGN
NO JOB TOO SMALL

KSBCOROMANDEL@GMAIL.COM 02108478056

BOBCAT and Truck Hire

- * Building Site & Driveway preparation
- * Post Hole Boring
- * Trenching
- * Metal & Topsoil Supplies
- * Section Clearance / Landscaping
- * Experienced Owner / Operator

**ALL TERRAIN
Bobcat Services**

Matarangi Based
Brendan O'Connell
M: 0274 934 212
A/H: 07 866 0505

"WE MAKE THE EARTH MOVE"

**HOME ESPRESSO
MACHINES**

REPAIR & SALES

coffee@coffeelala.com
07 866 5373

PANDIDO

quality carpentry
sam@pandobuilding.co.nz
021 223 7261

MATARANGI DRAINAGE
Registered Drainlayer

- * For all your Sewage & Storm water requirements
- * Certified Installer of Septic Tanks
- * Site & Floor Preparations
- * Footings & Drillings
- * Truck & Digger Hire
- * Metal & Topsoil Supplies

Contact Brian Ph: 07 866 5432 / 021 477 478



Vanishing Volcanoes: The Fiery Legacy of Mercury Bay

Going through my father's belongings recently, I stumbled across a book with an intriguing title: **Vanishing Volcanoes: A Guide to the Landforms and Rock Formations of the Coromandel Peninsula**, written by Lloyd Hamer and Phil Moore and published in 1992 by the Institute of Geological and Nuclear Services and Landscape Publishing. It was a great reminder that the land we walk on every day — the beaches we swim at and the tracks we climb was shaped by forces almost impossible to imagine.

We all know New Zealand is no stranger to volcanic activity. From the mudpools and geysers at Rotorua to the mountain peaks of the central plateau, fire has long been part of our story. Here on the Coromandel Peninsula, that fiery past stretches back millions of years and has left us with the spectacular scenery we now treasure.

When visitors flock to Hot Water Beach to dig their hot pool or visit The Lost Springs in Whitianga to soak in the thermal waters, they're enjoying the warmth of that ancient volcanic energy. However in our own Northern Mercury Bay, we also have evidence of volcanic activity that occurred right on our doorstep.

Castle Rock — also known as Motutere or the Sleeping Giant — is perhaps our most distinctive landmark. Its jagged pinnacles dominate the skyline and geologists believe these pinnacles are the hardened core of a

volcano that erupted around 11 to 12 million years ago. What we see today is the resistant heart of that volcano, left behind after millions of years of erosion stripped away its softer outer layers.

Between Whangapoua and New Chums, Motutu Point tells another chapter of the story. The striking vertical basalt columns found here were formed when molten magma cooled and contracted after a volcanic eruption millions of years ago. As the lava cooled, it cracked into geometric pillars. Pungapunga Island, just offshore from Whangapoua, is built from similar columned basalt.

And then there's Black Jack. Around five million years ago, the area surrounding Black Jack was home to hot pools and steaming springs. The scattered white boulders across the Waitaia Ridge are thought to be remnants of this activity — mineral deposits left behind as hot, silica-rich waters cooled and solidified.

The Mercury Islands are also the remnants of an intense period of volcanic activity that began between five and six million years ago. Basaltic lava erupted from at least ten volcanic craters scattered across what was then part of the mainland east of Kuaotunu. These eruptions built a cluster of small scoria cones — steep-sided hills formed from fragments of lava hurled into the air and piled around their vents. Over time, the cones spread across the surrounding landscape, creating a rugged volcanic field.

Then came the Ice Ages. When sea levels were far lower, this area remained connected to the mainland. Wind, rain and powerful coastal erosion gradually wore down the volcanic cones. As the climate warmed and glaciers melted, rising seas flooded the lower land, isolating the higher remnants. What had once been hilltops became islands, known today as The Mercs.

At Tokarahu Point which is near Opito Bay and only accessible only by boat — the remains of another basaltic scoria cone can still be seen. Much of the original cone was also stripped away during the Ice Ages as erosion carved into its layers. What remains today is a fragment of that once-prominent volcanic feature

It's easy to take our surroundings for granted. The beaches, cliffs and islands feel timeless. Yet they are the result of cataclysmic eruptions, flowing lava and geothermal forces that shaped this peninsula long before people ever set foot here.

Perhaps that's what made finding my father's old book feel special. It wasn't just a geology guide — it was a reminder that our landscape has a deep and dramatic history.

So next time you look up at Castle Rock, wander past the basalt columns at New Chums, drive the Black Jack or gaze over at the Mercury Islands, take a moment to imagine the volcanoes that once stood there.



Last week, Jordana Arnold from the Royal New Zealand Ballet (RNZB) visited to teach ballet basics and promote the joy of dance.

This popular workshop provided a fun introduction to movement with the children learning a short dance to music from The Nutcracker, which the Ballet Company performed late in 2025.

We also welcomed recently the iSPORT Foundation National Manager, Ness. She encouraged everyone to get involved in sports, and the charity generously donated over 40 sports balls!

We immensely appreciate this gift. Founded by rugby legends Dan Carter and Richie McCaw, iSPORT supports Kiwi youth to be the best they can be.

Josh Brljevic has agreed to fill the casual vacancy we had on the school board. It is great to have a second male trustee. Josh resides in Whangapoua and we look forward to working with Josh alongside us on the board.

Finally, a big thank you to our three GOLD Sponsors: Vause Construction; The Denize Family of Te Punga, Whangapoua; and Good As Gold Painting. Their sponsorship will go a long way towards helping our students get to their school camps later in the year.

Ma te huruhuru ka rere te manu - Adorn the bird with feathers to enable it to fly.

Mary Kedzlie

Principal - Te Rerenga School

Scott Simpson

MP for Coromandel

Contact me anytime
0800 550 330 • scottsimpson.co.nz
mpcoromandel@parliament.govt.nz
📍 [scottsimpsonmp](#)

Authorised by Scott Simpson, 614 Pollen St, Thames.

Your Garage Door Specialists

- *Sectional, Roller & Tilt doors
- *Insulated options
- *Automatic openers and remotes
- *Service /maintenance repairs
- *Security grills and shutters
- *Insurance quotes
- *Free measure & quote

Carswell Construction Ltd - Ph: 0800 374 000 or 07 86 88663

Keeping The Real in Real Estate

Simone Parr

Licensed Agent REAA2008
027 657 2980

Keith Goodall

Licensed Salesperson REAA2008
021 276 6474

Peter Sharp

Licensed Salesperson REAA2008
021 388 833

Helly Mobberley

Licensed Salesperson REAA2008
021 669 595

Matarangi / 07 866 0322
www.richardsons.co.nz

Discover the refreshing difference of partnering with a real estate agency that is dedicated to transparency, trust, and a shared passion for outstanding service. With Richardsons Real Estate, it's not just about closing a deal — it's about making a real difference.

Heartland Outreach Clinic

Whitianga Social Services wishes to apologise for the postponement of the Heartland Outreach clinic originally scheduled for Friday, 1st May at the Fire Station.

We now have a new date confirmed. The clinic will take place on Friday, 26th June, from 10:00 AM to 12:00 PM at the Fire Station.

We appreciate your understanding and look forward to seeing you there.



DOUG RUSSELL PLUMBING
for a prompt response
021 130 8745
KUAOTUNU



A group of Matarangi girlfriends had their annual weekend getaway and headed to Taupo. Of course they had to take the Matarangi Beach Paper with them! It's a bit like 'Where's Wally'! Who can spot the MBP?

THE FISHING REPORT

Matarangi Boat & Fishing Club

Fishing has remained steady, with some good snapper still being caught in close.

As we head toward the end of the 2025/2026 fishing season on 30 June, there is still time to get out there, land a beauty, and hopefully get your name on one of the many club trophies.

King's Birthday Weekend sees the return of our annual Members Only Snapper Measure Tournament. Results from the tournament will be published in the next edition of the Matarangi Beach Paper.

Planning is also well underway for the upcoming Matariki Land-Based Fishing

Tournament. This event continues to grow each year and is shaping up to be another fantastic weekend. Full details, entry information, and dates will be released on our website and social media pages in early June.

If you are thinking of joining the Matarangi Boat & Fishing Club, membership for the 2026/2027 season full details will be on our website early June.

You can keep up to date with news on our website: www.mbfcc.co.nz

Facebook page: <https://www.facebook.com/matarangiboatandfishingclub> and Instagram <https://www.instagram.com/matarangi.boat.fishing.club/>

DON'T TAKE RISKS, IF IN DOUBT, DON'T CROSS THE BAR.

WEARING A CORRECT FITTING LIFE JACKET IS A LEGAL REQUIREMENT WHEN CROSSING THE BAR.

The WHITIANGA COASTGUARD can be contacted on CHANNEL 63 and the NOW WEATHER REPORT is on CHANNEL 20.

Safe boating and limit your catch, don't catch your limit.

Tight Lines

Matarangi Boat & Fishing Club Inc.



LET'S BUILD HERE, TOGETHER.

- Free site appraisals across the Coromandel
- Undertake your complete build journey alongside local owners, Dan and Tanya
- In-house interior design consultant to bring your vision to life
- Local design and build specialists you can trust

Visit us at our Whitianga Design Centre, or give us a call and we can come to you!

6 Blacksmith Lane, Whitianga
07 868 0502 | urban.co.nz



EXCEPTIONAL BUILDS IN THE HEART OF THE COROMANDEL

ARCHITECTURAL HOMES | RENOVATIONS | PREMIUM RESIDENTIAL BUILDS

Coromandel Peninsula Specialists

Locally owned & trusted across the entire Coromandel Peninsula

Call Brett: 0277888043
www.parrbuilders.co.nz

Locally Owned & Operated Coromandel Peninsula Builders

A Sea of Pink for Breast Cancer



It was a sea of pink as 30 local ladies gathered for the annual Pink Ribbon afternoon tea at The Dunes last Sunday raising funds for Breast Cancer NZ Foundation.

The MC for the afternoon was Leanne Robinson from The Dunes who introduced the guest speaker, Dr Hannah Walker a GP at Whitianga's Te Korowai Medical Centre.

Hannah's talk was deeply moving and brave as she shared her own personal story with breast cancer. After just losing her mother to ovarian cancer she booked herself in for a mammogram. Sadly at only 41, it resulted in a breast cancer diagnosis and a journey of treatment. For Hannah, if she hadn't decided to make that decision to have a mammogram earlier than the usual age of 45 years, the outcome could've been very different and she reiterated the importance of early detection. Afternoon tea followed which was an array of

delectable pink treats made by chef Craig and The Dunes kitchen team.

A highlight of the afternoon was the Bra Pong competition. It caused great hilarity and was fiercely competitive. The winner was Tania Bleakley. There was a playoff for 2nd and 3rd between Judy Hall and Erin Crawley. Judy with a keen eye took the out the final honours.

Leanne thanked all the generous raffle and prize donors. The raffle proceeds along with the ticket sales directly raised funds for Breast Cancer NZ. The door prize went to Kaye Rule and Danielle Threadgold and Marie Steward were the two raffle winners.

A big thanks to Leanne Robinson, the team at The Dunes and other volunteers for organising such a fabulous afternoon, raising funds for such a great cause.

Richardsons Real Estate Matarangi Women's Open



Allison Drake-Wells stole the show at the annual Richardsons Real Estate Matarangi Women's 18-Hole Open Tournament, claiming the title of Overall Gross winner with an exceptional round of 81.

Her stellar performance did more than just secure the trophy; it also established a brand-new course record. The victory was met with immense pride by the host club, as Drake-Wells is the reigning Women's Club Champion, making the triumph a proud win for the local membership.

The tournament presented a magnificent challenge for the field of dedicated 18-hole affiliated golfers. As the intense battle unfolded across the fairways, players were treated to outstanding hospitality, with fresh sandwiches and fruit delivered directly to



them on the course to keep energy levels high from tee to green. While the rivalry on the grass was sharp, the day was equally defined by its warm community spirit and flawless organisation.

Sponsored generously by Richardsons Real Estate who the club committee thanks for their ongoing support, the event seamlessly blended quality golf with exceptional hospitality.

Final gratitude was reserved for the incredible team at The Dunes Golf & Community Club. The hard work of the kitchen, bar, golf shop, administration, greenkeeping and volunteers club members behind the scenes ensured that this year's open was remembered as another magnificent chapter in Matarangi's golfing calendar.



GOOD AS GOLD

Painting & Decorating

Taking INTERIOR PAINTING Bookings
Call now for a Free Quote

Steve Threadgold - 022 064 8932
goodasgoldpainters@gmail.com
@goodasgold.painting



Qualified Tradesmen
ACCREDITED PAINTER

Peninsula Pest Services



Contact us for the control and prevention of insects, rodents and other pests!

Phone Simon English on **027 555 1271**
Email: peninsulapest.nz@gmail.com
www.peninsulapest.co.nz



Proudly serving our communities since 1867

TWENTYMANS
FUNERAL DIRECTORS
Since 1867

07 868 6003
funerals@twentymans.co.nz
www.twentymans.co.nz

Our Coromandel

News from Thames-Coromandel District Council



June 2026

Local government reform announcement

Many in the community will have already heard about the government's latest announcement on reforming the local government sector.

Councils have until 9 August to submit a high-level proposal on joining with other councils to form unitary authorities that combine the functions of both local and regional councils.

Mayor Peter Revell says while he and his elected colleagues support the moves toward cost savings and efficiencies, our Council will



still ensure there is opportunity for all voices to contribute to any reform proposal that emerges.

The next step involves Council discussing in public how the reform proposal will be approached. This took place at the Council meeting on 26 May.

The report to Council on the Government's reform proposals, and the option to watch a recording of the meeting is available on our website at

www.tcdc.govt.nz/meetings

WHAT'S HAPPENING OVER

KING'S BIRTHDAY?



KERBSIDE COLLECTIONS AND TRANSFER STATIONS

Kerbside collections will be a day later than usual following the King's Birthday public holiday on Monday 1 June. For year-round kerbside collection calendars, check your local schedule at www.tcdc.govt.nz/bindays

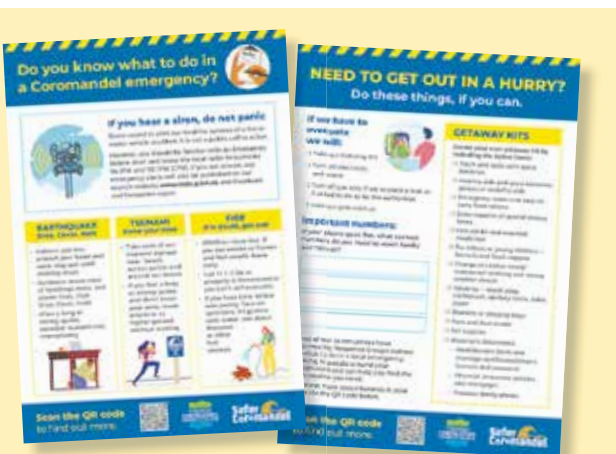
Our seven refuse and recycling transfer stations are open daily from 8:30am-4:30pm, including King's Birthday. www.tcdc.govt.nz/rts

OFFICES | DISTRICT LIBRARIES
Our offices (including AA services) and district libraries will be closed on Monday 1 June. You can still reach us 24/7 at 07 868 0200 or customer.services@tcdc.govt.nz

THAMES POOL
Thames Centennial Pool will be closed on Monday 1 June, resuming normal hours on Tuesday 2 June. www.tcdc.govt.nz/pools

DOG RESTRICTIONS
Please keep your dog on a lead in urban areas such as town centres and roads. Look out for Council's traffic light signage and check the rules in your area at www.tcdc.govt.nz/dogownerguide

ALCOHOL BANS
An alcohol ban is in place over King's Birthday weekend from 4pm Friday 29 May to 4pm Monday 1 June. www.tcdc.govt.nz/alcoholcontrol



VISITOR EMERGENCY GUIDES AVAILABLE

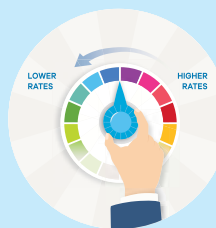
We've received feedback that some visitors to our district can feel confused or alarmed when they hear the local fire siren. In some other areas and countries, sirens can signal an evacuation due to tsunami or other emergencies, which is not the case here.

To support our Emergency Management Unit's work in building informed and resilient communities, we've developed new visitor-focused flyers that explain what local sirens mean, where to find trusted information, and what to do in an emergency. These are designed to help visitors feel informed and avoid unnecessary panic.

The flyers are now available on our website for download and printing via www.tcdc.govt.nz/EMvisitorguide

TOUGH CHOICES FOR LOWER RATES: FINAL DECISIONS NEAR

A big thank you to everyone who took time to share their views during our public feedback period for our proposed 2026/27 Annual Plan Tough choices for lower rates proposals.



We asked for feedback on four key trade-offs to help us lower the proposed rates increase. These were reducing mowing and garden maintenance, changing opening hours at some Refuse and Recycling Transfer Stations, increasing fees and introducing new charges and reducing selected rates remissions.

Our Council reviewed the feedback at its meeting on Tuesday 26 May and is scheduled to adopt the final Annual Plan on Tuesday 30 June. Watch this space for the latest updates and our final decisions: www.tcdc.govt.nz/AP2627



Te Wiki Tūao ā-Motu
National Volunteer Week
14-20 June 2026



YOUR YEAR TO VOLUNTEER?

Big thanks to our volunteers

National Volunteer Week (14-20 June) is New Zealand's largest celebration of volunteers and volunteering. This year's theme, Your Year to Volunteer - Tōu tau ki te tūao, recognises those of you

already giving your time, care and commitment to support your community, while also inviting others to get involved.

Whether you're coaching, caring, responding to emergencies, championing our environment or helping build local connections, your mahi makes a real difference. You help bring people together, strengthen whānau and communities, and support the wellbeing of our district.

To mark the week, Council is sharing personal 'thank you' messages from Mayor Peter Revell and each Community Board Chair, acknowledging the collective strength of mahi aroha you bring to our communities. To you all, kia ora rawa atu (big thanks).

We'll share these messages closer to 14 June at www.tcdc.govt.nz/VW2026

Did you know?

The Hikurangi Subduction Zone is our largest potential source of earthquake and tsunami risk.

If it's long or strong, get gone.

Find out more about what else you need to do in an emergency by visiting www.tcdc.govt.nz/HSZ



OUR NEXT MERCURY BAY COMMUNITY BOARD MEETING WILL BE WEDNESDAY 3 JUNE FROM 9AM AT THE MERCURY BAY SERVICE CENTRE 10 MONK ST, WHITIANGA. WWW.TCDC.GOV.TZ/MEETINGS

[@ThamesCoromandelDistrictCouncil](https://www.facebook.com/ThamesCoromandelDistrictCouncil)
[coromandel_tcdc](https://www.instagram.com/coromandel_tcdc)
Get our free eNewsletters!
www.tcdc.govt.nz/subscribe

www.tcdc.govt.nz
customer.services@tcdc.govt.nz
Private Bag, 515 Mackay St, Thames
Phone: 07 868 0200

Local Students Share April Japan Adventure



Four local students from Matarangi and Kuaotunu exchanged our quiet white-sand beaches for the neon lights and historic mountain towns of Japan this April. The Mercury Bay Area School students – Abby, Lucy, Ivy, and Zoe – embarked on a cultural journey through Tokyo, Hiroshima, Takayama, and Gujo Hachiman, returning home with a massive boost in confidence.

Stepping out of the Coromandel and into the world's most populous metropolitan area was an eye-opener. The girls were instantly struck by the distinct social etiquette and seamless organisation of Japanese society. "Everything was very 'follow these steps and you will achieve this,'" Abby noted.

"People were very polite and not pushy, and it made it easy to understand where to go and what to do." Ivy agreed, while Zoe was struck by "how clean everything was." Ivy also observed a stark difference in community safety compared to home: "Everyone has their very young children walking to school and they feel safe letting them walk there on their own."

The travel itinerary offered a diverse taste of Japan. The girls navigated the fast-paced energy of Tokyo, stayed at the Koko Hotel in traditional Takayama, and visited Hiroshima. Reflecting on the historical gravity of Hiroshima, Abby found the Peace Memorial deeply moving. "To see the clothing and belongings and names of people whose lives were destroyed by the atomic bomb made it very real," she said.

In contrast, a trip to Miyajima Island offered natural beauty. Lucy recalled taking a river boat to the island, famous for its 16-metre-tall torii

gate. "The island is filled with wildlife and cherry blossom trees," Lucy shared. "From the lookout point, you can see the whole of Hiroshima harbour... It was so cool to see and such an amazing experience." The absolute highlight was the homestay experience and school visit in the riverside town of Gujo Hachiman.

Ivy found the cultural immersion deeply rewarding, noting, "joining the homestay was so interesting and such an amazing way to experience the culture." Both Abby and Zoe noticed a stark difference in sleep schedules. "The whole family, including small children, would stay up super late and always wake up at 5 in the morning," Zoe remarked. Abby also observed the minimalist beauty of traditional home design: "The house didn't really have lounge furniture, and we all sat on mats with pillows."

The timing of their April trip allowed the students to catch the tail end of the cherry blossom season and join the Gujo Hachiman Spring Festival. Abby and Ivy even participated directly in the parade. "The different schools made floats and carried them through the town," Abby explained. "Ours was a cartoon cat and I followed doing blowing a whistle."

Visiting Gujo High School provided another fascinating cultural comparison. Lucy quickly picked up on the daily routines that define Japanese schools. "You have to change into school slippers instead of wearing outside shoes and clean the school and classrooms every day after school is finished," she noted. She also observed that "after school sports and clubs are very popular, pretty much everyone participates."

Communication required some creative teamwork through a mix of English and Japanese, but the language barrier was easily overcome by kindness. Ivy joined an English class where they spoke "through a mix of English and Japanese so we could both practice." Despite the challenges, Lucy recalled that the Japanese students "were all extremely kind and friendly towards us."

No trip to Japan is complete without exploring the food scene. The local girls experienced everything from savoury street eats to unique textures. Abby fell in love with Okonomiyaki, a massive savoury cabbage pancake cooked on a flat grill (teppan). "It was really big and I'm glad I shared it!" Abby laughed. Zoe tried Takoyaki, describing it as "a battered ball with diced octopus inside of it."

The ultimate takeaway for all four students was a massive surge in self-belief. "Hearing the language spoken and seeing real people understand what I was saying really boosted my confidence," Abby shared. Ivy found herself proactively choosing to speak Japanese "whenever I got the chance in stores or just on the street."

For other local students thinking about heading overseas in the future, the girls have some golden advice: "Don't go to McDonald's for every meal," Abby advised. "Just be open to trying new things!" Ivy echoed this, adding, "don't be afraid to talk to people in stores or ask for help, many people are very polite." Unsurprisingly, all four girls are already dreaming of their next journey across the Pacific.

Featured: Mercury Bay Area School students meeting students from Gujo Senior High School in Gifu Prefecture, Japan.

Ten Years On

Longtime holidaymaker Ted Puddick passed away on 6 May 2016. He purchased his Matarangi holiday section over 30 years prior and was a well-known community member. He belonged to the local fishing club for 20 years starting in 1996 and frequented the fire station. He was also known locally as one of the fastest tractor drivers in town.

In June 2016, A Taste of Matarangi (ATOM) committee chair Bronwyn Rinui presented donation cheques to Alison Harris of the Auckland Rescue Helicopter Trust and Steve Hart of Kuaotunu Search and Rescue (KSAR). Since the festival's inception in 2012, the event had raised and donated a total of \$37,000 to the rescue helicopter and \$4,000 to KSAR.

Plans were confirmed for a replica of the HMS Endeavour to visit Mercury Bay from 21–28 October 2019. The visit marks the 250th anniversary of Captain Cook's first arrival in New Zealand. Mercury Bay Community Board Chair Paul Kelly and Ngāti Hei leader Joe Davis joined a national coordinating committee following meetings with the Ministry for Culture and Heritage. The Mercury Bay 250 Trust is coordinating local heritage monuments, a superyacht race, and an official ceremony.

On 26 May 2016, approximately 50 people attended the first movie night of the year at Luke's Café. The "Season of Cinema" initiative, run by the Coromandel Film Collective and Luke's Kitchen, screens New Zealand films to raise community funds during winter. The event raised just under \$300 from ticket sales for the Kuaotunu Kindergarten.

Kuaotunu resident and professional photographer Ian Preece of Seascape Photography Workshops was accepted into the New Zealand Art Show in Wellington, held from 3–6 June 2016. This selection followed his successful solo exhibition, "Across the Pacific," hosted at Luke's Kitchen in January 2016.

Holistic Health MASSAGE
 Located at 992 Te Rerenga – Kuaotunu Rd
 For appointments contact Bronwyn Rinui
 021 158 4774
www.bronwynsmassage.com

COROMANDEL BUILDING CENTRE
PH: 866 8848
 "We'll see you right"

GaiaDecorators LIMITED
 PAINTING HOMES ACROSS THE COROMANDEL
 Mark Gaia 021 295 5532 | 07 866 8157
 COROMANDEL | gaiadecorators@gmail.com
www.gaiadecorators.co.nz

A-FRAME STRUCTURES
 Simon Devoy Structural Engineer (CPEng, NZ)
 E simon@devoy.nz
 M 0211 657 028
 W A-Frame.nz
 Reliable | Sustainable | Quality

G & J ELECTRICAL SERVICES LTD
 Installation & Repairs
 Glenn Griffin
 Registered Electrician
 P: 021 981 058
 E: gnejelec@gmail.com
 Authorised Service Agent: Renhardt/Hotstream

Logic AV LTD. Control4 Authorized DEALER SONOS Authorized DEALER
 Audio Visual Design, Supply and Installation
 Networked Audio Specialist
 Control 4 Smart Home Installer
 Professional Wi-Fi Networks
james@logicav.co.nz 021 781 971

DYNAMIC ELECTRICAL LTD
PROFESSIONAL - RELIABLE - HONEST

HEATPUMPS

Sales and installation of Mitsubishi and Fujitsu Heat-pump /Air conditioning.

Call Bill for a free no obligation quote.

027 2714803

www.dynamicelctrical-whitianga.co.nz



All five naked eye planets are visible this month with the two brightest, Jupiter and Venus, putting on a lovely early evening show with both rising ever higher in the sky each night until mid-month. Venus rises more quickly and is the brighter of the two and actually passes much more distant Jupiter on June 10. Much fainter Mercury lies almost on the horizon but gets slightly higher each day reaching its highest on the 26th before gradually starting to descend towards the horizon. Meanwhile both Saturn and Mars are visible low in the eastern dawn sky and the Moon can help us find them all. The Pleiades or Matariki will be visible with binoculars late in the month very low in the eastern pre-dawn sky.

There will be some Chinese Tiangong and International Space Station (ISS) passes to view this month but, as usual, timings may change especially towards the end of the month if they have to be moved to avoid space junk. It is always best to check the website heavens-above.com for updated timings.

- June 2 – We have a long bright ISS pass starting in the SW from 6:20am and moving just above Saturn.
- June 3 – We have a bright ISS pass from 5:35am high overhead as it pops out of the Earth's shadow.
- June 4 – The ISS pops out of the Earth's shadow in the west from 6:21am.
- June 5 – Venus sits directly above fainter Jupiter at dusk in the west and there is a short ISS pass from 5:37am in the north.
- June 6 – Venus has moved steadily closer to fainter Jupiter in the western dusk sky.
- June 8 – The Moon, Saturn and Mars all lie equally spaced in the eastern dawn sky with Saturn closest to the Moon.
- June 9 – The Moon has moved down closer to Saturn with Mars lower down at dawn while at dusk in the west Jupiter and Saturn are at their closest until 2028.
- June 10 – The Moon now sits just above and to the left of Saturn at dawn.
- June 11 – Saturn is now just above the Moon with Mars lower down at dawn while Venus and Jupiter start to pull apart in the western dusk sky briefly accompanied by the ISS from 7:02pm before it disappears into the Earth's shadow.
- June 12 – The Moon is now half way down towards Mars and in the evening we have a good ISS pass from 6:15pm near to Jupiter and Venus.
- June 13 – The Moon lies just to the left of Mars at dawn with Saturn higher up and from 7:04pm we have an ISS pass in the west.
- June 14 – The Pleiades or Matariki sit low in the east just above the Moon before sunrise and binoculars can help to find them while from 6:16pm in the west we have the ISS moving next to Jupiter and Venus.
- June 16 – The Moon, Mercury, Jupiter and Venus are all lined up at dusk in the west.
- June 17 – The Moon now sits between Jupiter and faint Mercury at dusk and from 6:17pm in the west we will have a good ISS pass to their right.
- June 18 – Jupiter is now just on the western horizon after dusk. The Moon sits just above Venus at dusk with Jupiter and Mercury lined up below.
- June 19 – The Moon now sits high above equally spaced Venus, Jupiter and Mercury in the western dusk sky.
- June 20 – Venus now lies just beside the Beehive cluster, a lovely sight in binoculars.
- June 23 – Jupiter has now moved to be just above faint Mercury with bright Venus well above in the western dusk sky.
- June 26 – Jupiter and much fainter Mercury are at their closest at dusk today with bright Venus well above while from 5:52am we have a Tiangong pass high overhead as it pops out of the Earth's shadow.
- June 30 – Binoculars will show Mars and the Pleiades or Matariki at the closest they will be until 2038 at pre-dawn very low in the east.
- July 1 – From 7:11pm we have an ISS pass in the west.
- July 2- We have a good ISS pass from 6:23pm in the SW.

STARGAZERS
Phone: 07 866 5343

ARTSPACE: The Kuaotunu Art Trail



At the recent Kuaotunu Residents and Ratepayers Association (KRRRA) AGM, the community was presented with a transformative vision for the village's future: the establishment of the Kuaotunu Art Trail.

The initiative aims to shift the village's public identity from a popular hospitality hotspot to a destination defined by its deep artistic roots. Describing herself as a magpie for global concepts, Gilbert Palmer drew on years of international travel to form the proposal.

Her ideas bridge the high-fashion circuits of Paris, the avant-garde vibes of Uruguay, and world-renowned art destinations like Japan's Naoshima Island and Marfa, Texas. The project seeks to give these global inspirations a snug refit that honors and preserves Kuaotunu's unique coastal character. Central to the trail is the recognition that the village is anchored by its resident artists, writers, and musicians.

To bring the concept to life, Gilbert Palmer presented a photographic study identifying 25 specific sites. These locations weave together historical landmarks and modern creative outputs using an Art with Purpose approach. The trail will reveal the deeper narratives behind local monuments that residents and visitors might pass daily without realizing their significance.

Featured public artworks will include the Ake Ake Arch by Chris Charteris, a unique structure crafted from repurposed silver tags collected from the first Kauri 2000 plantings which the trees have since outgrown. The project is quickly moving from concept to execution.

A dedicated working group is currently forming to formalise the route and manage logistical next steps. The initiative builds on collaborative momentum in the region, as the group has previously worked alongside Waihi architect Kyle Anaru, who shared an inspirational Art Space project proposal at an Arts Hui for Tamateta last October.

The ultimate ambition for the working group is to install a permanent, vibrant mural or map in the heart of the village, ensuring Kuaotunu's creative secrets are permanently preserved for everyone to explore.

Featured: Shirley Willey with Isabel Gilbert-Palmer sitting on the handcrafted bench that overlooks Kuaotunu beach. The bench, crafted by a family friend was installed in the memory of Elke Gaebler is one of the proposed stops on the Kuaotunu Art Trail.

Image courtesy of Ian Preece Photography.

MATARANGI PLUMBING

ANDREW RICHARDSON
CERTIFYING PLUMBER

0274 712 247

MATARANGIPLUMBING@GMAIL.COM

Licensed Building Practitioner

Prompt and Tidy.
Over 20 yrs experience.

Phone: 0274 756651

ULTIMATE JOURNEYS
Curated travel for your next Ultimate Journey

Summer Abrahamson
International Travel Broker
Email: summer@ultimatejourneys.net
64 27 376 0695

RENEE WOODS ARCHITECT LTD

+64 21 111 8740
renee@renewoodsarchitect.co.nz
renewoodsarchitect.co.nz
@renee.woods.architect

MBP The Matarangi Beach Paper

Have a story to tell or something to sell?

contact@matarangibeachpaper.com

Golfing Girls On Tour



Twenty one of the Dunes Golf Club women recently enjoyed a fabulous two-day golf getaway, with rounds played at Whitford Park Golf Club and Formosa Golf Resort.

With plenty of laughs, good company, and a few adventures along the way, the trip was a fantastic success both on and off the course.

A huge thank you goes to our wonderful sponsors, Wilson Consumer Products and Lesley from 'Good Coffee Mataz', for their generous support, and also to Formosa

Golf Resort for kindly donating a much-appreciated closest-to-the-pin prize. Congratulations to our overall winners: Brenda Riggs, winner of the 18-hole competition with runner-up Michelle Swainbank, and Ruth Fiskin, winner of the 9-hole competition with runner-up Julie Clayton.

Thank you to everyone who came along and helped make the trip such an enjoyable one — we're already looking forward to the next adventure.

**Matarangi
Mid-Winter Swim**

12 noon - Sunday 21st June
Village Green, Matarangi Beach

Hot Chocolate & Port for the Swimmers

EMBARRASSED BY YOUR FEET?

SYLVIA LOK
PMU & PEDICURE SPECIALIST

- ADVANCED FOOTCARE
- DERMAPEN NEEDLING
- PERMANENT MAKE UP
- BEAUTY TREATMENTS

JUNE SPECIAL
60 minute specialist pedicure

Just \$99

European trained with 25 years experience

ph 021 199 0222
www.sylvialok.co.nz

- Ingrown Toenails
- Thick Toenails
- Corns & Calluses
- Verrucas
- Cracked Heels
- Diabetic footcare

WHITIANGA FLOORING XTRA

WALK INTO WINTER SALE

Savings on our Best-Selling Carpet, Timber, Laminate, LVT & Sheet Vinyl

WHITIANGA FLOORING XTRA 68 Albert Street
E: whitianga@flooringxtra.co.nz P: (07) 866 2836

WINTER SALE ON YARD STOCK

Locally Made. Ready to Move.

We specialise in High-quality transportable homes built in Whitianga. Featuring signature timber interiors, perfect for family living, holiday escapes, rentals, or farm accommodation.

Book a visit today and find your dream home

5 Moewai Road, Whitianga
evanshomes@xtra.co.nz

PH 027 497 1183
www.evansgroup.co.nz

Help from local **Trades and Services**
Family Fun Things to do Events
 Where to **Shop** The best places to **Eat**
Community groups Getting Married



Find it all in one place!



Monday

Ladies' Pilates
 Matarangi Fire Station
 9-10 am Christiane 0273 122 584

Kuaotunu Craft & Social Club
 Kuaotunu Hall
 1-4 pm Lia 07 866 2054

Books & Banter (Book club)
 7-9 pm 1st Mon each month Pauline
 dickinsonpauline@gmail.com

Contract Bridge
 St John's Room, 355 Tiki Rd, Coromandel
 Tadek 027 235 6335 or Tadekgawor@gmail.com

Tuesday

Croquet
 Coromandel Croquet Assoc, Woolams Ave
 9.15 am-12 pm 07 866 8066

Bridge for Beginners
 The Dunes 3-5 pm
 Bronwyn 021 0231 1130

Menz Shed
 Matarangi Drive 8 am-12 pm
 (open at all times to members)
 Phil 021 0272 5230

Wednesday

Men on Mats (Men's Pilates)
 Matarangi fire station, 9-10 am
 Christiane 0273 122 584

Pickleball - social play
 Matai Place Courts - 9 am start during summer
 Kay 020 41200975
 Jenni 021 1700869

Kuaotunu Steiner Playgroup
 9am-12pm Phone: 07 866 0094

Mah Jong
 The Dunes 12.30-3 pm
 Lesley, 021 280 0780.

Contract bridge
 Mercury Bay Bowling Club, Whitianga, 1pm
 Tadek 027 235 6335 or Tadekgawor@gamil.com

Kuaotunu Garden Group
 2nd Weds of the month
 Kuaotunugardenclub@gmail.com

Ladies Coffee morning
 The Dunes, 10 am first Weds of the month

Kuaotunu Dune Care Group
 3rd Weds of the month
 Jenny 021 566 6035

Thursday

Pickleball - competitive play
 Matai Place Courts 3.30-5.30 pm
 Grant 022 383 6351

Walking Group
 Meet at the Dunes 9.00 am
 Briar 021 361 944

Craft Group
 The Dunes, 12.30 fortnightly
 Lesley 021 280 0780

Recreational Darts
 The Dunes, 6.00 pm every other Thursday The Dunes
 07 866 5394

Friday

Lawn Bowls
 The Dunes, 2.15-4.15 pm
 Wayne Davis 027 458 9544

Croquet
 Woolams Ave, Coromandel
 9.15 am-12 pm
 07 866 8066

Saturday

Pickleball for all
 Matai Place Courts, 8.30-10.30 am
 Grant 022 383 6351

Hash House Harriers
 3 pm winter and 4 pm summer
 Bronwyn 0210 231 1130

Brew Crew (Home brewing)
 Fire Station Matarangi
 Phil Mosen 027 4761734

Sunday

Sunday Market
 Matarangi Drive (in front of shops), 10 am-1pm
 Long weekends summer to Labour weekend
 Lesley 021 280 0780

Golf

The Dunes Golf Club Days - Affiliated Visitors
 Welcome:

Mens 9 Hole Monday [Back 9] and Thursday
 [Front 9] - 9.20am

Ladies 9 Hole Tuesday [Front 9] and Thursday
 [Back 9] - 9.30am

Mens 18 Hole Wednesday - 10am

Ladies 18 Hole Thursday - 10am

Twilight 9 Holes Friday - 2.30pm-3pm

Mixed Haggie 18 Holes Saturday - 10.30am-
 11.30am (Pre-register via The Dunes website)

Justice of the Peace

MATARANGI

Mary Kedzlie 027 2904940 or 07 8664096 (work).
Simone Parr Ph: 027 6572980
Ernest Raina Ph: 021 716 852

OPITO-KUAOTUNU

Geoff Martin Ph: 021942213
Sue Edens Ph: 027 486 8036

BB:

An adventure, activity, and values based
 ministry for boys aged 5-15 years old.
 For info contact: Robyn 020 409 39674
 or email: robyn.balfour2@hotmail.com

123456789
Urgent Numbers



COASTGUARD 866-2883 (Emergency 111)
COROMANDEL DOCTOR 866-8500
RESCUE HELICOPTER 866-5147 (Emergency 111)
MATARANGI BEACH PAPER (Liam) 027 8689568

LANDSAR KUAOTUNU (Emergency 111)
MAREE TAYLOR (Celebrant) 021 0429127
MEDICAL CENTRE 866-5911
MP for COROMANDEL OFFICE 868-3529
MATARANGI RATEPAYERS 021 754 078
MATARANGI FIRE STATION 866-4325 (Emergency 111)
MATARANGI RESERVES MANAGEMENT GROUP (Robin 021548070)
ROAD CLOSURES 0800 444449
RUBBISH TIP 866-5427
RD2 WHITIANGA (Toby) 021 587 221

TWENTYMANS FUNERALS 8686003
TCDC AREA OFFICE 8680200
REGIONAL COUNCIL OFFICE (07) 866 0172
ST JOHNS AMBULANCE 0800426285 (Emergency 111)
WHITIANGA POLICE STATION 866-4000 (Emergency 111)

CONTACTS & DEADLINES

This is your community paper. We welcome all your stories, photos, messages and contributions.

THE TEAM
 Editor: Liam Kedzlie
 Deputy Editors: Teresa & Mary Kedzlie
 Printer: NZME Commercial Printers

ALL ENQUIRIES
 Liam 027 868 9568
 contact@matarangibeachpaper.com

BUSINESS ADVERTISING
 Please email or phone Liam for a rate sheet.

DELIVERIES
 The rural letterbox deliveries are the first Friday of every month.

SUBSCRIBE
 For a monthly e-version subscribe at: contact@matarangibeachpaper.com

DISCLAIMER
 Opinions expressed in The Matarangi Beach Paper are not those of the publisher and editors. No responsibility accepted for loss or damage suffered by anyone relying on the information within. No endorsement of any service or product advertised or featured is implied or assumed.

MBP

Now is the time to start thinking about your Summer advertising requirements with the Matarangi Beach Paper.

Email Liam at
 contact@matarangibeachpaper.com
 or text 027 868 95689568

Matarangi Ratepayers Association. Inc.

- Working hard on your behalf to protect and preserve community values and amenities.
- Our success depends on your support.

For details on how to join, go to:
<https://www.ourmatarangi.com/join>

STARGAZERS

Astronomy Tours

Night or Daytime
 Tours available.

Bed & Breakfast
 Accommodation available

STARGAZERS offers an ideal dark sky site to observe the stunning New Zealand southern night sky in all its dark sky glory with a range of optical tools on offer.

392 SH 25, RD2 KUAOTUNU

www.stargazersnz.com

PH: 07 866-5343

June 2026 Tides

	High	Low	High	Low	High
4		02:05:00	08:19:00	14:36:00	20:45:00
5		02:51:00	09:04:00	15:20:00	21:29:00
6		03:37:00	09:49:00	16:04:00	22:11:00
7		04:23:00	10:34:00	16:48:00	22:52:00
8		05:09:00	11:19:00	17:32:00	23:33:00
9		05:55:00	12:04:00	18:16:00	
10	06:41:00	12:49:00	19:00:00	18:44:00	
11	07:27:00	13:34:00	19:44:00	19:29:00	
12	08:13:00	14:19:00	20:28:00	20:20:00	
13	08:59:00	15:04:00	21:12:00	21:18:00	
14	09:45:00	15:49:00	21:56:00	22:18:00	
15	10:31:00	16:34:00	22:40:00	23:16:00	
16	11:17:00	17:19:00	23:24:00		
17		12:03:00	18:04:00	00:08:00	18:45:00
18		12:49:00	18:49:00	00:52:00	19:33:00
19		13:35:00	19:34:00	01:36:00	20:18:00
20		14:21:00	20:19:00	02:20:00	21:03:00
21		15:07:00	21:04:00	03:04:00	21:49:00
22		15:53:00	21:49:00	03:48:00	22:35:00
23		16:39:00	22:34:00	04:32:00	23:24:00
24		05:36:00	11:47:00	18:01:00	
25	00:17:00	06:30:00	12:40:00	18:54:00	
26	01:14:00	07:30:00	13:38:00	19:52:00	
27	02:15:00	08:33:00	14:41:00	20:55:00	
28	03:20:00	09:39:00	15:47:00	22:01:00	
29	04:24:00	10:43:00	16:53:00	23:05:00	
30	05:25:00	11:43:00	17:54:00		
31		00:04:00	06:19:00	12:37:00	18:49:00
1		00:56:00	07:08:00	13:26:00	19:38:00
4		02:05:00	08:19:00	14:36:00	20:45:00
5		02:51:00	09:04:00	15:20:00	21:29:00

LINZ

All about
Whitianga
 See yourself here®

Proud sponsor of local community groups, clubs and events

allaboutwhitianga.co.nz

Phone Cathy: 021 396 481



Moving House?

Packing | Removals | Storage

Local | NZ wide | International



- ✓ On site inspection
- ✓ Packing service (optional)
- ✓ Storage
- ✓ Specialist items

Your trusted local team since 2010

07 866 5589

www.nzmoveit.co.nz

info@nzmoveit.co.nz



Inspiration starts here.

Guthrie Bowron
Whitianga

Trust us with your decorating project



WE OFFER
INSPIRATION
AND EXPERT
ADVICE

EVERYTHING
YOU NEED TO
REFRESH
YOUR SPACE

BOOK A FREE
IN HOME
MEASURE
AND QUOTE

07 866 0035

2/9 Joan Gaskell Drive, Whitianga

sales@gbwhitianga.co.nz

www.facebook.com/gbwhitianga

LOCAL ASSISTANCE
WITH SUBDIVISIONS,
SITE SURVEYS
AND BOUNDARY
PEGGING.

Mark Blayney
Emma Rich

07 866 0088

26 Lee Street,
Whitianga

Call Emma
direct today:
027 299 3778



0800 268 632

www.surveyingservices.co.nz

KELLY BOWEN
boulique creative
DESIGN STUDIO

BEAUTIFUL BRANDING & WEBSITE CREATION
THOUGHTFUL MARKETING STRATEGY
STORYTELLING PHOTOGRAPHY
CREATIVE VISUALS CRAFTED
FOR MODERN BUSINESSES

021 026 08330
WWW.KELLYBOWENDESIGN.COM

@kellybowendesign hello@kellybowendesign.com

WWW.LANDANDVOLT.CO.NZ

LAND & VOLT
ELECTRICAL

LANDANDVOLT@GMAIL.COM

021 060 0685

MATARANGI, COROMANDEL PENINSULA + SURROUNDING AREAS



Protect your home, bach, or business.
Professional security
installation + monitoring.
Contact Grant + Kelly 021 026 08330

/Richardsons

Keeping the 'Real' in Real Estate



Spectacular Matarangi Beachfront
220 Kenwood Drive, Matarangi

1040m² 5 4 2

Deadline Sale

Offers to be received by 1pm, 16 June 2026 (unless sold prior)

Keith Goodall
021 276 6474
richardsons.co.nz/RM4436

Recent Price Changes

- 124 Goldfields Dr now \$1,100,000
- 113 Sands Cres now \$1,050,000
- 171 Rangiora Cres now \$940,000
- 616 Matarangi Dr now \$920,000
- 102 Sands Cres now \$895,000
- 157 Harbour Dr now \$629,000
- 42 Taniwha Pl now \$545,000
- 330 Harbour Dr now \$390,000
- 221 Managakhia Dr now \$1,100,000
- 35B Cuvier Cres now \$770,000



Long Term Rental Available
159 Harbour Dr, Matarangi

- \$600 Per Week \$2400 Bond
- Available from 7th July 2026 (1 year fixed)

Tanya Marshall
021 022 99 787
richardsons.co.nz

/Richardsons
Real Estate Ltd MREINZ / Matarangi

www.richardsons.co.nz

PROUDLY LOCAL

RayWhite

JUST LISTED



145 Rangiora Crescent, Matarangi

Enquiry over \$1,600,000 4 2 637m²



150 Harbour Drive, Matarangi

\$969,000 3 2 2 688m²



112 Ocean Close, Matarangi

PBN 4 2 2 807m²



126 The Fairway, Matarangi

PBN 3 2 2 510 m²



Louise Bradley
027 348 1700
louise.bradley@raywhite.com

Call your Matarangi based Salespeople for a current market appraisal.



Pip Perry
020 4063 7380
pip.perry@raywhite.com

rwmatarangi.co.nz
White Sands Realty Ltd
Licensed (REAA 2008)

BUY OF THE MONTH



108 MAHOE PLACE, MATARANGI

GARAGE UTILITY WITH CABINS

Flexible Living in Mahoe Place

HOLIDAY RETREAT | MULTI-USE LIVING | FUTURE POTENTIAL



- Private cul-de-sac location in sought-after Mahoe Place
- Flexible cabin-style living with multiple-use options
- Fully fenced 612m² section with space to grow
- Close to the beach, harbour, golf course & shops

VIEW ONLINE www.beachrealty.co.nz/985



MARK HALL
Licensed Agent (REA 2008)
M: 021 607 135
E: mark@beachrealty.co.nz



SHIRVANI HALL
Licensed Salesperson (REA 2008)
M: 021 028 46458
E: shirvani@beachrealty.co.nz

SOLD

BAYLEYS



Boundary lines are indicative only

136 Te Punga Road, Whangapoua

Vendors want it gone!

Set on a generous 1,264sqm (more or less) of flat land, this exceptional section offers the space and freedom to design a home that reflects your vision and values. Direct access from the back of the section leads to a scenic pathway through the reserve, leading you effortlessly to the golden sands of Whangapoua Beach

FOR SALE: \$490,000



Belinda Sammons
M: 027 272 7728 | B: 07 866 0098
belinda.sammons@bayleys.co.nz



Kylie Pullen
M: 021 163 6514 | B: 07 866 0098
kylie.pullen@bayleys.co.nz

MH REALTY LTD, BAYLEYS, LICENSED UNDER THE REAA 2008



BEACH REALTY

COUNTRYMAN REALTY LIMITED LICENSED REAL ESTATE AGENT REA 2008